

Moog Music USB MIDI Driver and new Minitaur firmware v2.1.5

Instructions for test:

Step 1: Update Minitaur to new firmware version 2.1.5, following the instructions in the Minitaur Firmware Update Instructions.txt file.

Step 2: Remove any old instances of generic USB driver for Minitaur, using USBDevice.

- Get USBDevice, a free utility which requires no installation, just unzip and run:
 - USBDevice for 32-bit Windows: <http://www.nirsoft.net/utls/usbdevice.zip>
 - USBDevice for 64-bit Windows: <http://www.nirsoft.net/utls/usbdevice-x64.zip>
 - (information at http://www.nirsoft.net/utls/usb_devices_view.html)
- Launch USBDevice.exe
- sort by VendorID (click the VendorID column header), look for VendorID 2662. 2662 is the VendorID for Moog Music.

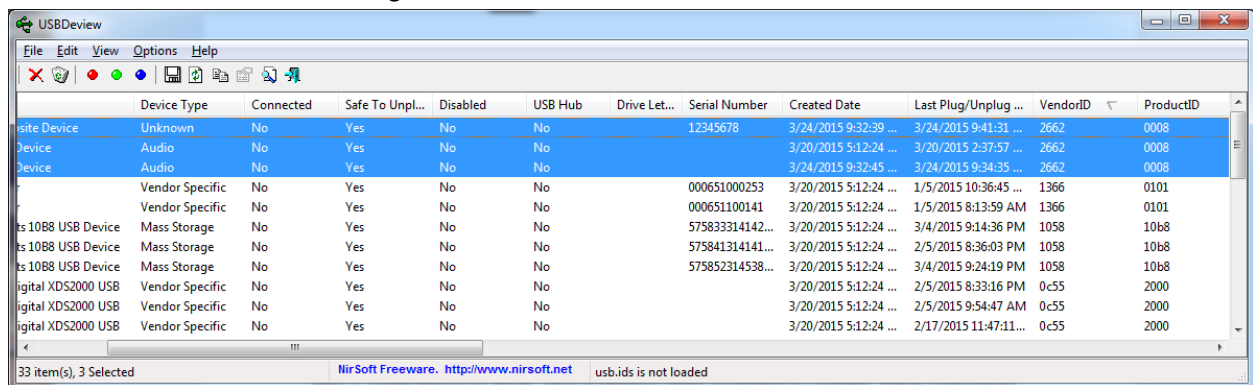


Fig. 1: USBDevice main window; old/generic USB drivers for Minitaur are selected.

- For any entries with VendorID 2662, look at the ProductID. If you see ProductID 0008, this is Minitaur.
- Highlight any entries you find with ProductID 0008 and VendorID 2662. Right-click on the entries and choose “Uninstall Selected Devices” from the right-click menu. This will remove the old USB driver entries from your system.

Step 3: Launch the installer “MoogMusic_MIDI_DriverSetup_v2.23.0.exe” to install the Moog USB MIDI driver. Start with the Minitaur USB unplugged; don’t plug in Minitaur USB until prompted by the installer. (The image below shows the prompt to plug in the Minitaur)

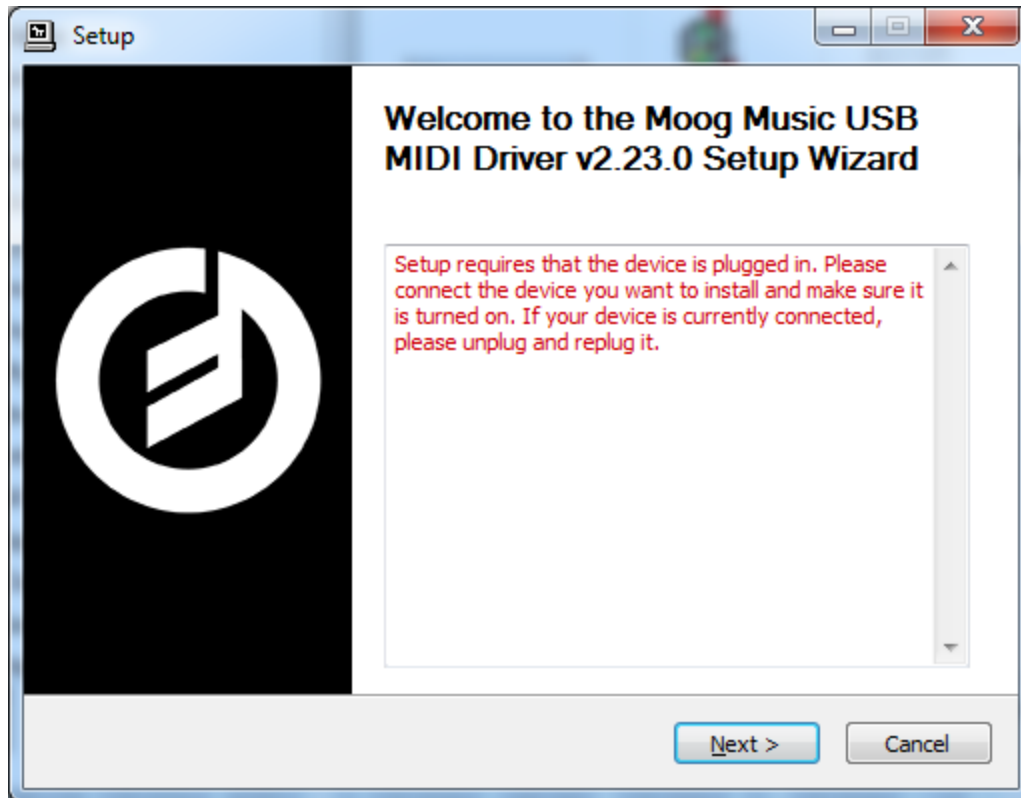


Fig. 2: When you see this prompt, connect the Minitaur USB to your computer and press Next.

That should be it. Minitaur USB driver should work now, and should allow both the Editor and your DAW to use the Minitaur USB MIDI port at the same time.

You will know it's working if the Minitaur USB port name appears as "Minitaur In" and "Minitaur Out" in your software. The labels "In" and "Out" are only applied to the Minitaur USB MIDI ports if the Moog driver is running.

Thank you for testing this update. Please report your results to Amos at Moog Music (amos@moogmusic.com); let us know if the USB driver is working for you with the new firmware.